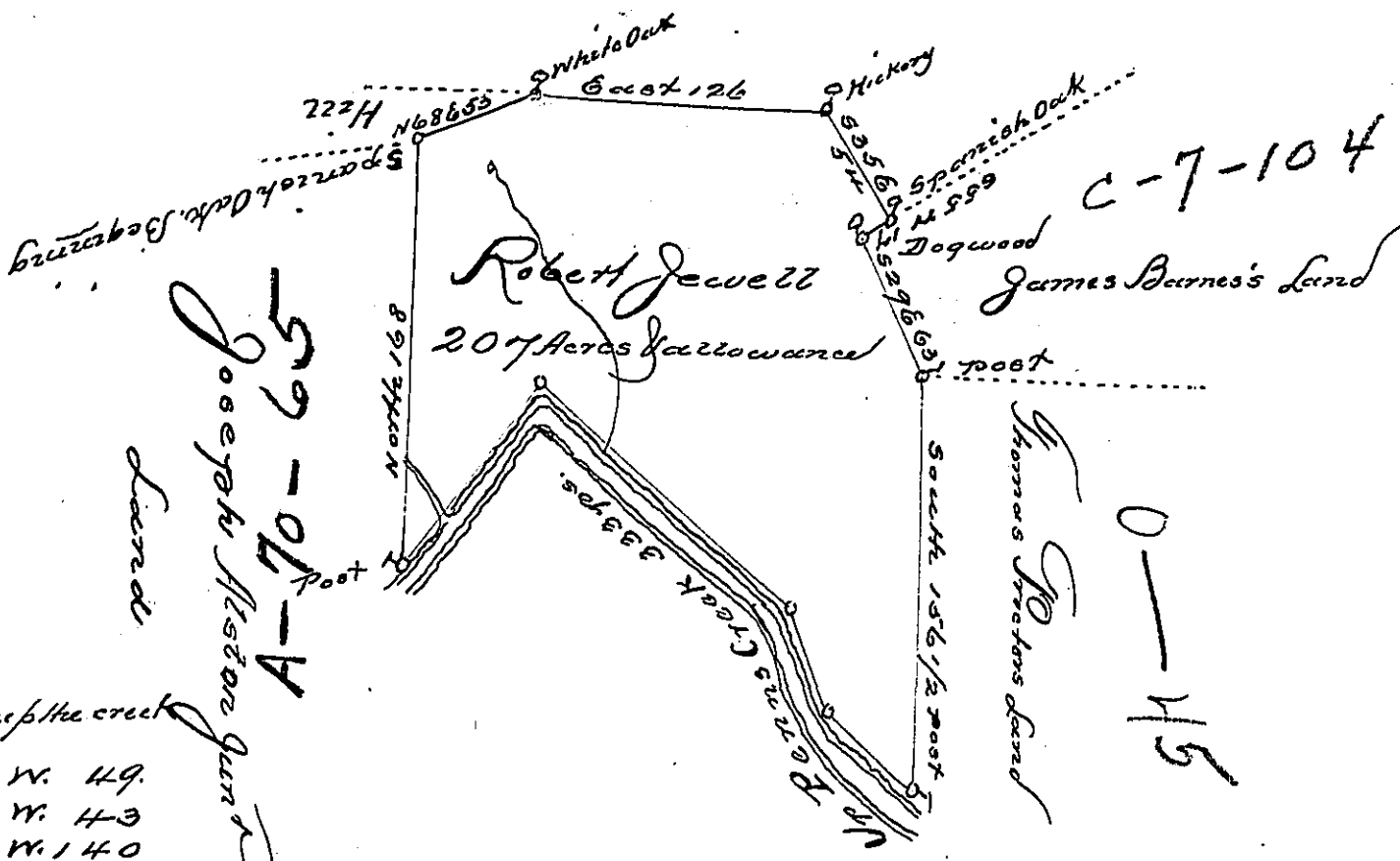


C-7-103
Samuel Brocke Land



The courses of the creek

N. 50. W. 49.
N. 23. W. 43
N. 51. W. 140
S. 36. W. 101
In all 333

The Draught of a Tract of Land called — situated on the North side of Perry's Creek in Buffaloe Township Northumberland County, containing Two hundred and seven acres and the arrowance of six p. Cont for Roads surveyed the 15th day of June 1773, in pursuance of a warrant from the Hon^{ble} the Proprietors to Robert Jewell Bearing date at Philad^a the 24th day of May Anno Domini 1773.

To John Lukens Esqr
 Junr. Genl. of the Province
 of Pennsylvania

J. Wm. Maday

IN TESTIMONY that the above is a copy of the original remaining on file in the Department of Internal Affairs of Pennsylvania, made conformably to an Act of Assembly approved the 16th day of February, 1833, I have hereunto set my Hand and caused the Seal of said Department to be affixed at Harrisburg, this 5th day of February 1901.

James W. Latta
 Secretary of Internal Affairs.